

STATE INNOVATION MODEL






For Legislators

WHAT IS SIM?

Maine's State Innovation Model (SIM) award is a \$33 million grant from the US Centers for Medicare and Medicaid Innovation that seeks to bolster work currently underway in our state to **reduce healthcare costs, strengthen clinical quality, and improve patient experience.**



SIM PARTNER FUNDING AND ROLES

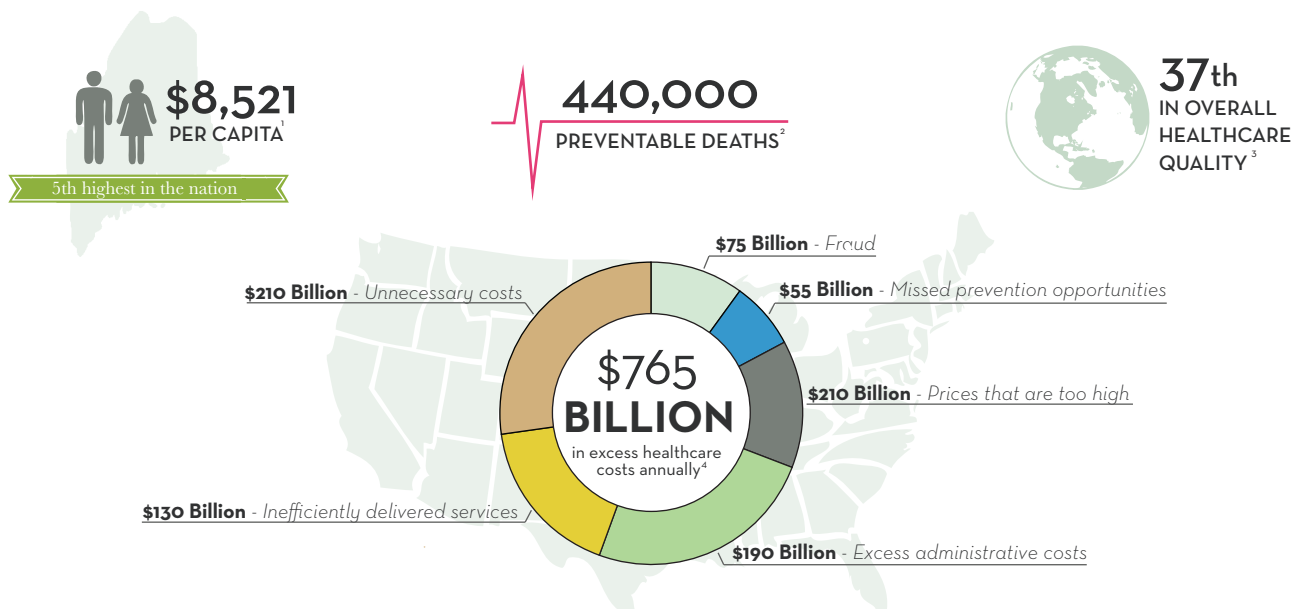
- 
\$12.2 Million The **Maine Health Management Coalition** will contribute data analytic capabilities, payment reform expertise, public reporting and consumer engagement work
- 
\$7.7 Million **HealthInfoNet** will build Health Information Technology (HIT) infrastructure to support clinical quality improvement, payment reform and patient engagement efforts
- 
\$4.7 Million **Maine Quality Counts** will provide clinical quality improvement services to strengthen primary care and support the expansion of Patient-Centered Medical Homes
- 
\$2.1 Million The **State of Maine** is the SIM awardee, and will oversee the management and disbursement of SIM funds
- 
\$6.8 Million Evaluation, Leadership, Medical Care Development, Other contracts

SIM GOALS

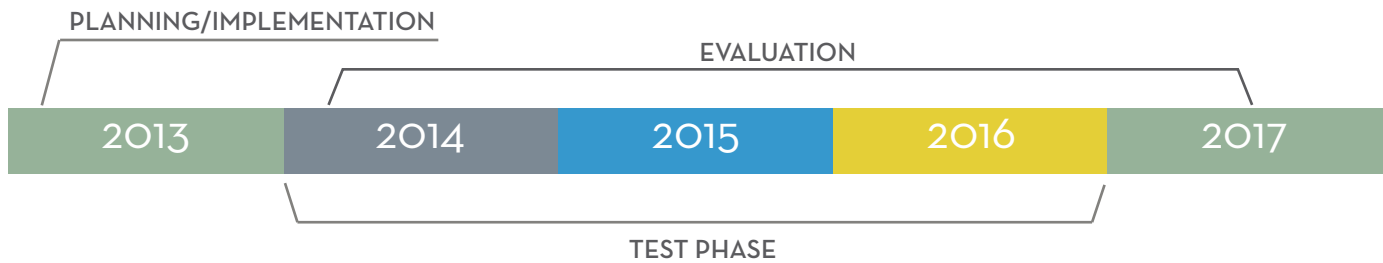
- Reduce the total cost of care per member per year to the national average
- Improve population health in at least 4 disease categories (diabetes, mental health, obesity, tobacco)*
- Improve patient experience scores for targeted practices by 2% from 2012 baseline
- Increase the number of practices reporting patient experience from 50% to 80%
*Population health categories may be subject to revision

WHY SIM?

PERVERSE INCENTIVES, FRAGMENTED DELIVERY & A LACK OF TRANSPARENCY =



SIM TIMELINE



SIM CONTACTS

Randal Chenard

SIM Program Director
Randal.Chenard@maine.gov

Trevor Putnoky

SIM Communications Specialist
tputnoky@maine.gov

Dr. Kevin Flanigan

Medical Director, Office of MaineCare Services
Chair, SIM Steering Committee
Kevin.Flanigan@maine.gov

Katie Sendze

Program Director, HealthInfoNet
Chair, Data Infrastructure Subcommittee
KSendze@hinfonet.org

Frank Johnson

Director of System and Payment Reform,
Maine Health Management Coalition
Chair, Payment Reform Subcommittee
FJohnson@mehmc.org

Lisa Tuttle

PCMH Team Leader for Project Management,
Maine Quality Counts
Chair, Delivery System Reform Subcommittee
LTuttle@mainequalitycounts.org

Holly Lusk

Senior Policy Advisor, Governor's Office
Chair, Maine SIM Leadership Team
Holly.Lusk@maine.gov

FOR MORE INFORMATION, VISIT MAINE.GOV/DHHS/SIM

1. Centers for Medicare and Medicaid Services (2011). Health Expenditures by State of Residence. Retrieved (January 2014) at <http://www.cms.gov/NationalHealthExpendData/downloads/resident-state-estimates.zip>.

2. James, John T., PhD. A New, Evidence-based Estimate of Patient Harms Associated with Hospital Care. *Journal of Patient Safety*, September 2013. Volume 9, Issue 3, p 122-128.

3. World Health Organization. World Health Organization Assesses the World's Health Systems. World Health Organization. Published June 21, 2000. Retrieved (January 2014) at <http://www.who.int/inf-pr-2000/en/pr2000-44.html>

4. Institute of Medicine. Best Care at Lower Cost: The Path to Continuously Learning Health Care in America. Institute of Medicine. Published September 6, 2012. p 30-31. Retrieved (January 2014) at <http://www.propublica.org/documents/item/422075-iom-report-on-cost.html#document/p32/a70964>